

# **PCE<sup>®</sup>**

---

## **UPS SYSTEMS**



**VISTA-650E/ VISTA-850E/ VISTA-1200E**  
**Line Interactive UPS**

**■ USER'S MANUAL ■**

## Table Of Contents

1. Safety - Caution.....	1
2. System Introduction .....	2
3. Installation and Operation.....	3
4. Trouble Shooting Guide .....	5
5. Technical Specifications .....	6

Thank you for purchasing this UPS system product. For utilizing its features and benefits, please read the following instructions on its installation, usage and safety cautions thoroughly.

## 1. Safety – CAUTION

- This UPS utilizes voltages that may be hazardous. Do not attempt to disassemble the unit. The unit contains no user serviceable parts. Only factory service personnel may perform repairs.
- Internal battery voltage is 24VDC sealed lead-acid, 6 cells battery two pcs for Vista-1200E and 12VDC sealed lead-acid, 6 cells one pc for vista-650E/ vista-850E.
- Connection to any other type of receptacle other than a two-pole, three-wire grounded receptacle may result in shock hazard as well as it may violate local electrical codes.
- In the event of an emergency, press the OFF button and disconnect the power cord from the AC power supply to properly disable the UPS.
- Do not allow liquids or any foreign object to enter the UPS. Do not place beverages or any other liquid-containing vessels on or near the unit.
- This unit intended for installation in a controlled environment (temperature controlled, indoor area free of conductive contaminants). Avoid installing the UPS in locations where there is standing or running water, or excessive humidity.
- Do not plug the UPS input into its own output.
- Do not attach a power strip or surge suppressor to the UPS.
- Do not attach non-computer-related items, such as medical equipment, life-support equipment, microwave ovens, or vacuum cleaners to UPS.
- To reduce the risk of overheating the UPS, do not cover the UPS' cooling vents and avoid exposing the unit to direct sunlight or installing the unit near heat emitting appliances such as space heaters or furnaces.
- Unplug the UPS prior to cleaning and do not use liquid or spray detergent.
- Do not dispose of batteries in a fire as they may explode.
- Do not open or mutilate the battery or batteries. Released electrolyte is harmful to the skin and eyes. It may be toxic.
- A battery can present a risk of electrical shock and high short circuit current. The following precautions should be observed when working on batteries:
  - 1) Remove watches, rings, or other metal objects from the hands.
  - 2) Use tools with insulated handles.
  - 3) Wear rubber gloves and boots.
  - 4) Do not lay tools or metal parts on top of batteries.
  - 5) Disconnect charging source prior to connecting or disconnecting batteries terminals.
- Servicing of batteries should be performed or supervised by personnel knowledgeable of batteries and the required precautions. Keep unauthorized personnel away from batteries.
- When replacing batteries, replace with the same number and type of sealed lead-acid battery. The maximum ambient temperature rating is 40°C.

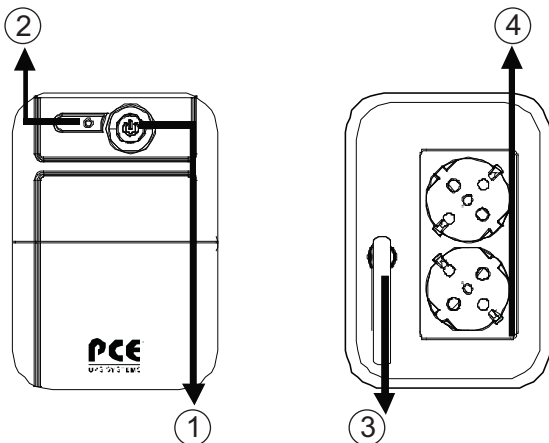
- This pluggable type A equipment with battery already installed by the supplier is operator installable and may be operated by laymen.
- During the installation of this equipment it should be assured that the sum of the leakage currents of the UPS and the connected loads does not exceed 3.5mA.
- Attention, hazardous through electric shock. Also with disconnection of this unit from the mains, hazardous voltage still may be accessible through supply from battery. The battery supply should be therefore disconnected in the plus and minus pole of the battery when maintenance or service work inside the UPS is necessary.
- The mains socket outlet that supplies the UPS shall be installed near the UPS and shall be easily accessible.

## 2. System Introduction

This UPS is specially designed for Personal Computer with multi-functions. Its light weight, compact design fits to the limited working environment. The line of UPS is equipped with boost and buck AVR to stabilize input voltage range. It has also built-in DC start function. This function enables the UPS to be started up without AC power supplied.

### Features

- Microprocessor control guarantees high reliability.
- Equipped with Boost and Buck AVR.
- Green Power Function for energy saving.
- DC Start Function.
- Auto restart while AC recovery.
- Compact size, Light Weight.
- Provides AC Overload protection.



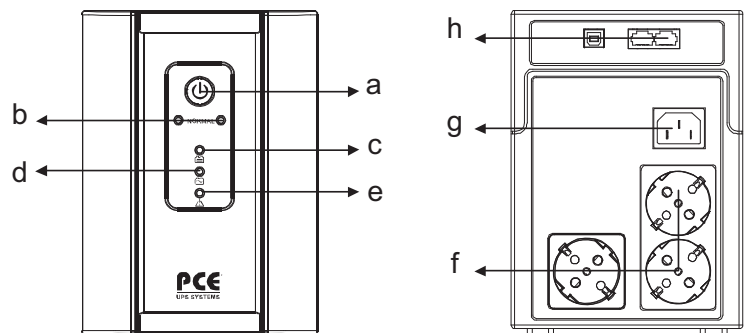
**VISTA-650E/ VISTA-850E**

#### Front Panel

1. Power Switch
  2. LED Indicator –
- AC Mode: Green lighting  
Battery Mode: Green Flashing

#### Back Panel

3. AC input
4. Output outlets



**VISTA-1200E**

#### Front Panel

- a. Power Switch
- LED Indicators –
- b. Normal: Green lighting
- c. Battery Mode: Yellow flashing
- d. AC Mode: Green lighting
- e. Fault: Red lighting

#### Back Panel

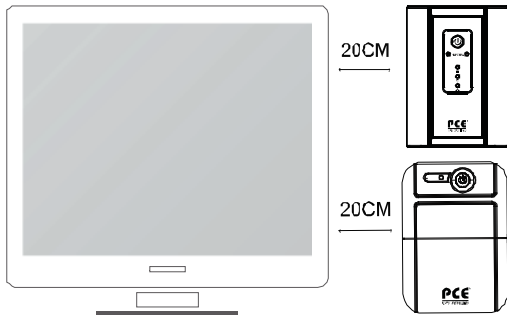
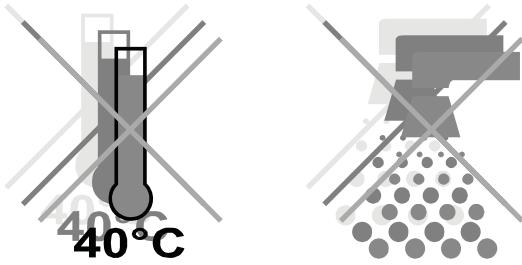
- f. Output outlets
- g. AC input
- h. USB port&RJ45 communication

### 3. Installation and Operation

#### ■ Inspection

Remove the UPS from its packaging and inspect it for damage that may occur during shipping. If any damage is discovered, repack the unit and return it to the place of purchase.

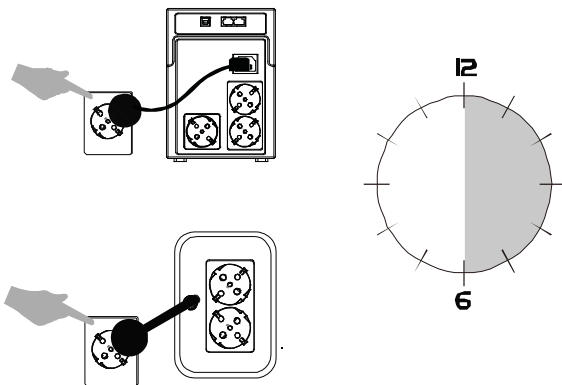
#### ■ Placement



Install the UPS unit in any protected environment that provides adequate airflow around the unit, and is free from excessive dust, corrosive fumes and conductive contaminants. Do not operate your UPS in an environment where the ambient temperature or humidity is high.

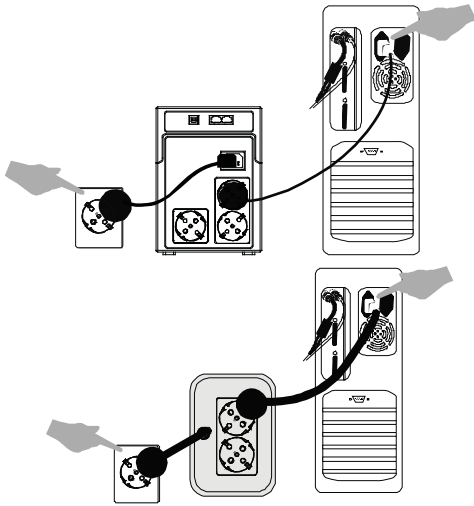
On the other hand, place the UPS away from the monitor at least 20cm to avoid interference.

#### ■ Recharge the UPS



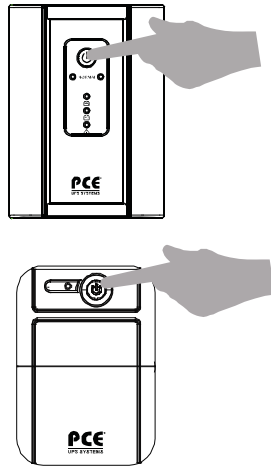
This unit is shipped from the factory with its internal battery fully charged, however, some charge may be lost during shipping and the battery should be recharged prior to use. Turn on the UPS, Plug the unit into an appropriate power supply and allow the UPS to be fully charged by leaving it plugged in for at least 6 hours with no load (no electrical devices such as computers, monitors, etc.) connected.

## Connection



Plug the UPS into a 2-pole, 3-wire grounded receptacle. Then connect one computer-related device into each of the power receptacles supplied on the back of the UPS.

## Turn On/Off UPS



To turn on the UPS unit, press the power switch lightly. To turn off the UPS unit, press the power switch again.

## DC Start

All Series are equipped with DC Start function. To start the UPS when AC utility power is not available, simply press the power switch.

## Green Power Function

All UPS is equipped with Green Power Function. For saving power and protecting battery, the method of deep discharging protection is adopted on inverter mode

## 4. Trouble Shooting Guide

If any abnormal situations occur other than the listed below, please call service people immediately.

### The UPS fails to turn on and No LED display on the front panel

Possible Cause	Solution
Battery weak.	Charge battery up to 8 hours.
Battery defect.	Replace with the same type of battery.
Power switch is not pressed.	Press the power switch again.

### Alarm buzzer beeps continuously when AC supply is normal.

Possible Cause	Solution
Overload of the UPS.	Verify that the load matches the UPS capacity specified in the specs.

### When power failure, back-up time is shortened than the normal status

Possible Cause	Solution
Overload of the UPS.	Remove some non- critical load.
Battery voltage is too low.	Charge battery 8 hours or more.
Battery defect due to high temperature operation environment, or improper operation to battery.	Replace with the same type of battery.

### Mains normal but LED is flashing.

Possible Cause	Solution
Power cord is lost.	Reconnect the power cord properly.

## 5. Technical Specifications

Model Vista Series		Vista-650E	Vista-850E	Vista-1200E
<b>Output power</b>		650VA/360W	850VA/480W	1200VA/720W
<b>Input</b>	Voltage	220V/230V/240V		
	Voltage Range	165-280VAC		
<b>Output</b>	Voltage (on battery)	220V/230V/240V +/-10%		
	Frequency (on battery)	50 or 60Hz +/- 1 Hz		
	Output waveform	Modified Sinewave		
	Transfer Time	4 to 8 milliseconds, including detection time		
<b>Protection</b>	Full Protection	Discharge, overcharge and overload protection		
<b>LED Indicators</b>	Normal Mode	N/A	Green Lighting	
	AC Mode	Green Lighting		
	Battery Mode	Green Flashing	Yellow Flashing	
	Fault	N/A	Red Lighting	
<b>Audible Alarm</b>	Battery Back up	Slow beeping sound (every 10 sec)		
	Battery Low	Rapid beeping sound (every 1 sec)		
	Overload	Rapid beeping sound (every 0.5 sec)		
	Fault	Continuous beeping sound		
<b>Battery</b>	Type	Sealed lead acid, maintenance free, with 3-5 years lifetime		
	DC Voltage	12VDC	24VDC	
	Typical Recharge Time	6 hours (to 90% full capacity)		
	Protection	Automatic self-test discharge protection		
	Back up Time	30 min		
<b>Communication</b>	USB	N/A	Detect battery low, schedule UPS On/Off, AC input/output power status display	
	RJ45	N/A	Available RJ45 Network communication port	
	Compatibility	N/A	Novell, Windows 95 / 98 / ME / NT/Vista / 2000 / XP / 2003	
<b>Physical</b>	Receptacles	Optional country specific receptacles		
	Dimensions (WxDxH) mm (inch)	100 x 278 x 143 (3.9"x 10.9"x 5.61")		139 x 365 x 195 (5.45"x 14.3"x 7.64")
	Shipping Weight Kg (lbs)	4.4(9.68)	5(11)	8.6(18.92)
<b>Environment</b>	Ambient Operation	3,500 meters max. elevation, 0-95% humidity non-condensing, 0-40°C		
	Audible Noise	<40dBA(1 meter from surface)		
	Storage Condition	15,000 meters max.		
<b>Standards &amp; certifications</b>	Safety	EN 50091-1-1/EN 69050 (RD), IEC 60950		
	Electromagnetic compatibility	EN 50091-2, EN 50022/B, IEC 62040-2, IEC 61000-3-2, IEC 61000-3-3		
	Design, production & services	ISO 9001		
	Environment	ISO 14001 certified company		

\*Specifications may change without further notice

# WWW.PCEUPS.COM

Please visit our website at [www.pceups.com](http://www.pceups.com) for updates and additional product information.

**North America**

PCE UPS SYSTEMS Inc.  
4805 Colombo Cres.  
Mississauga, Ontario  
Canada

**Europe**

PCE – Pronergy SA  
5 Rue Ampere  
91380, Chilly Mazarin  
France

**Middle East**

PCE UPS SYSTEMS FZCO  
LOB 16 #236, Jebel Ali Free Zone  
P.O.Box 261840, Dubai  
UAE